

4 540 693.72

F23-d4

4 540 641.03

468 449.27

2P-329

468 389.74

4 540 000

4 537 500

4 535 000

4 532 500

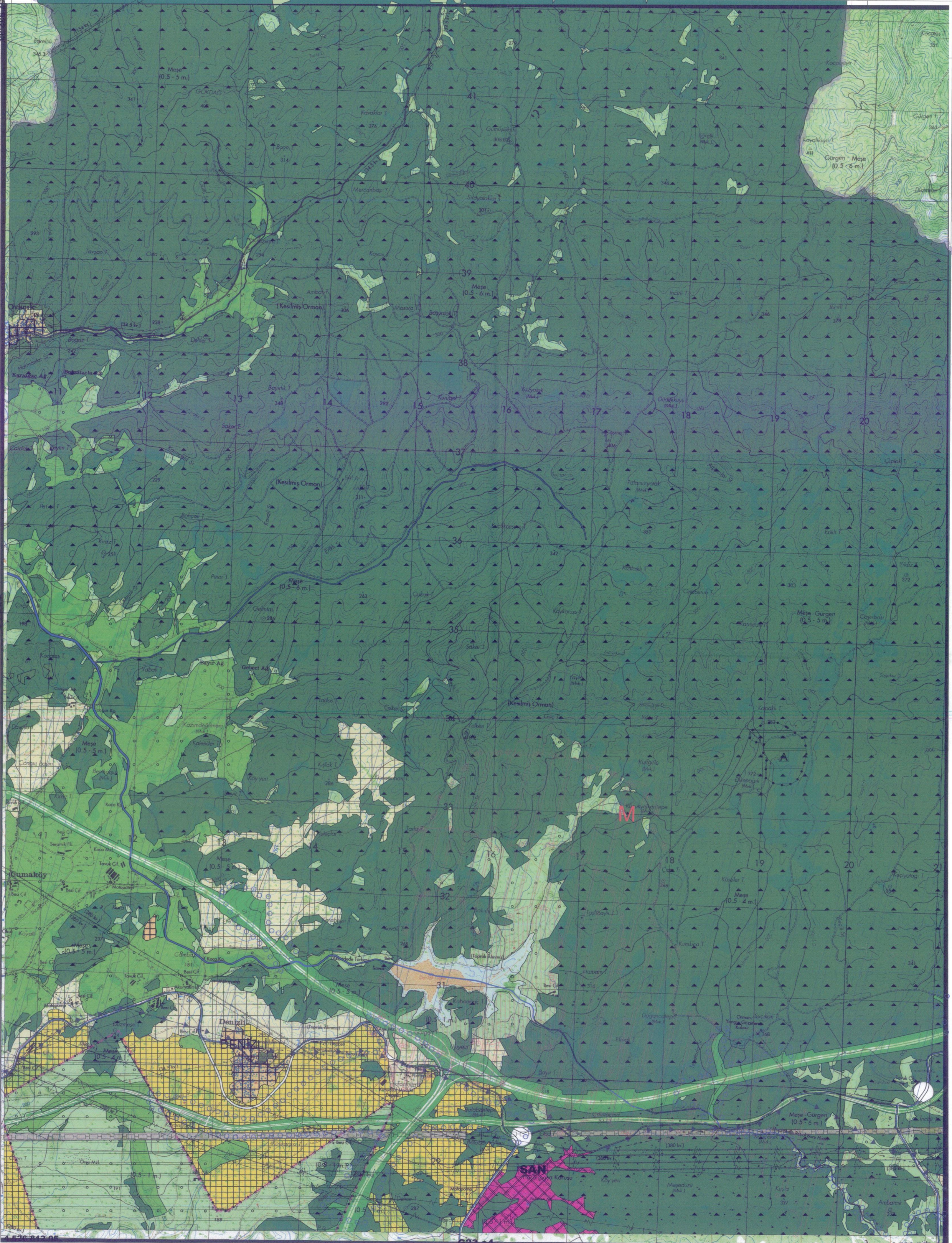
4 530 000

4 527 500

457 852.95

G22-12

457 852.95



Handwritten notes and a circular official stamp are present on the right side of the map. The stamp contains text in Turkish, including 'MÜHÜR' and 'T.C. ÇEVRE, ŞEHİRCİLİK VE KLİMA BAKANLIĞI'.

KOCAELİ-G23-a1
(GEBZE)

1/25000

KOCAELİ
(GEBZE)
G23-a2
F23-d3

4 540 641.03

4 540 603.40

4 540 000

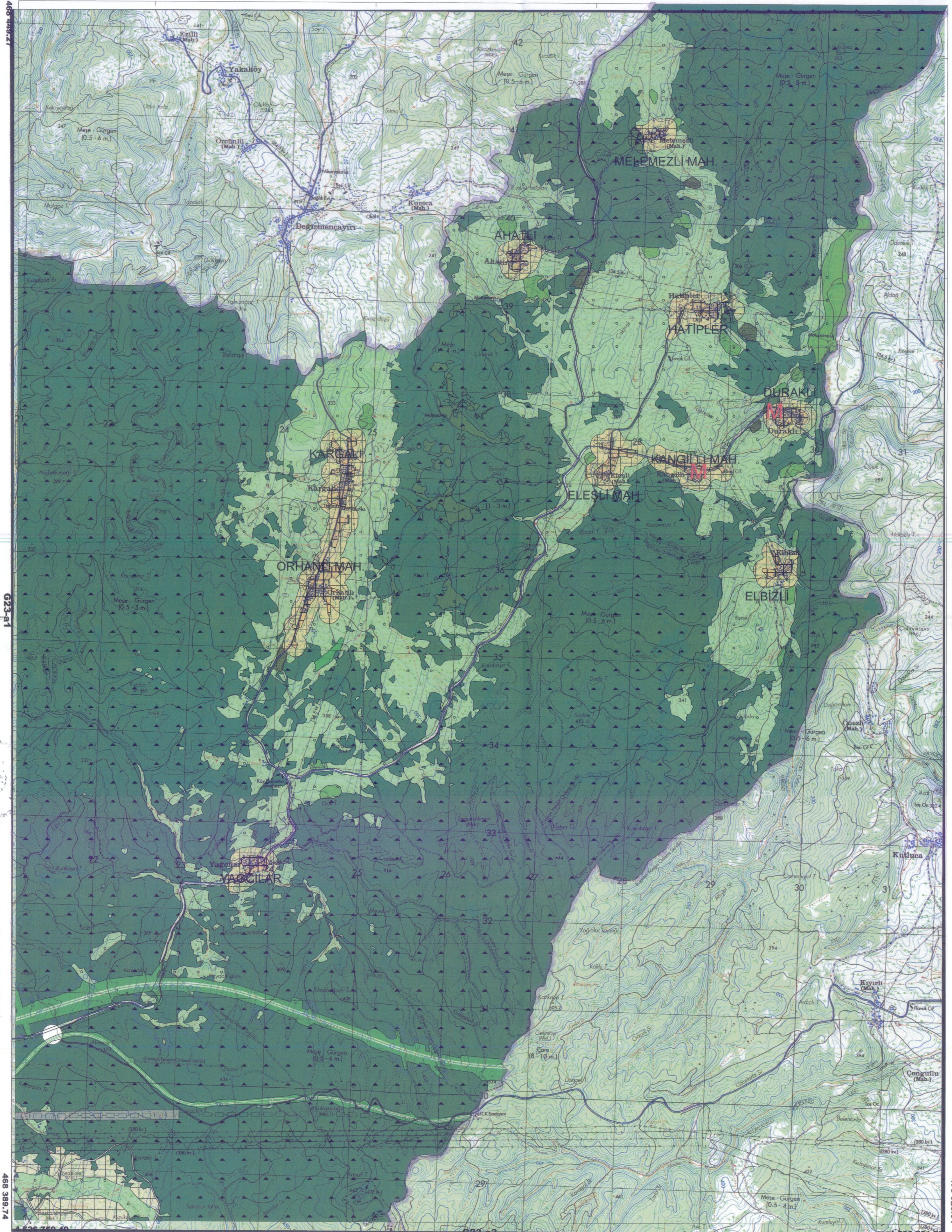
4 537 500

4 535 000

4 532 500

4 530 000

4 527 500



478 966.19

14-523

478 926.51

470 000

472 500

475 000

477 500

1/25000

KOCAELİ-G23-a2
(GEBZE)

KOCAELİ

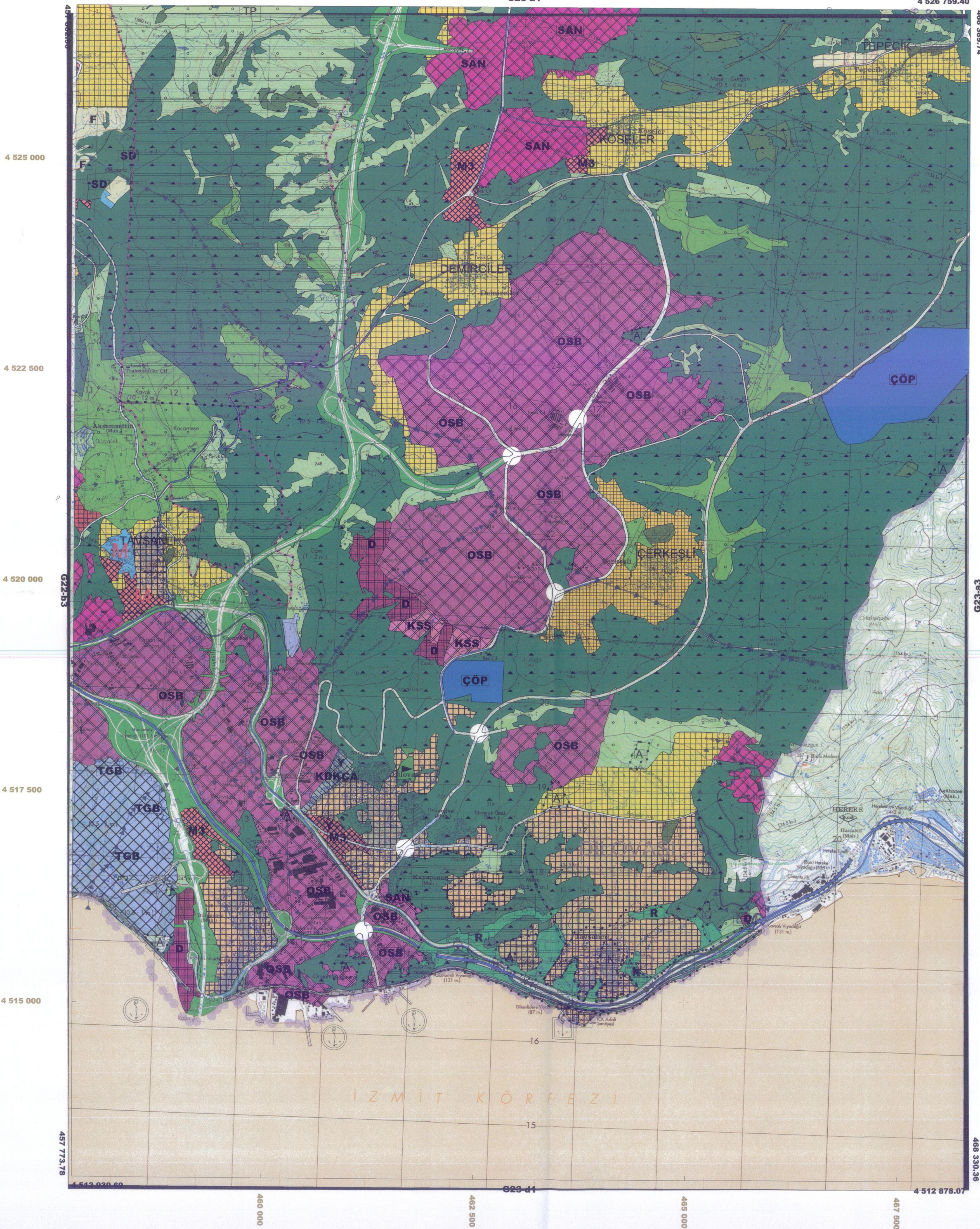
(GEBZE)

G23-a4

G23-a1

4 526 812.05

4 526 759.40



1. Harita Çizim ve Kontrol
2. Harita Kontrol ve Kontrol
3. Harita Kontrol ve Kontrol
4. Harita Kontrol ve Kontrol



KOCAELİ-G23-a4
(GEBZE)

1/25000

KOCAELİ

(GEBZE)

G23-a3

G23-a2



KOCAELİ-G23-a3
(GEBZE)

1/25000

KOCAELI

(GEBZE)

G22-b2

F22-c3

4 540 761.46

4 540 693.72

4 540 000

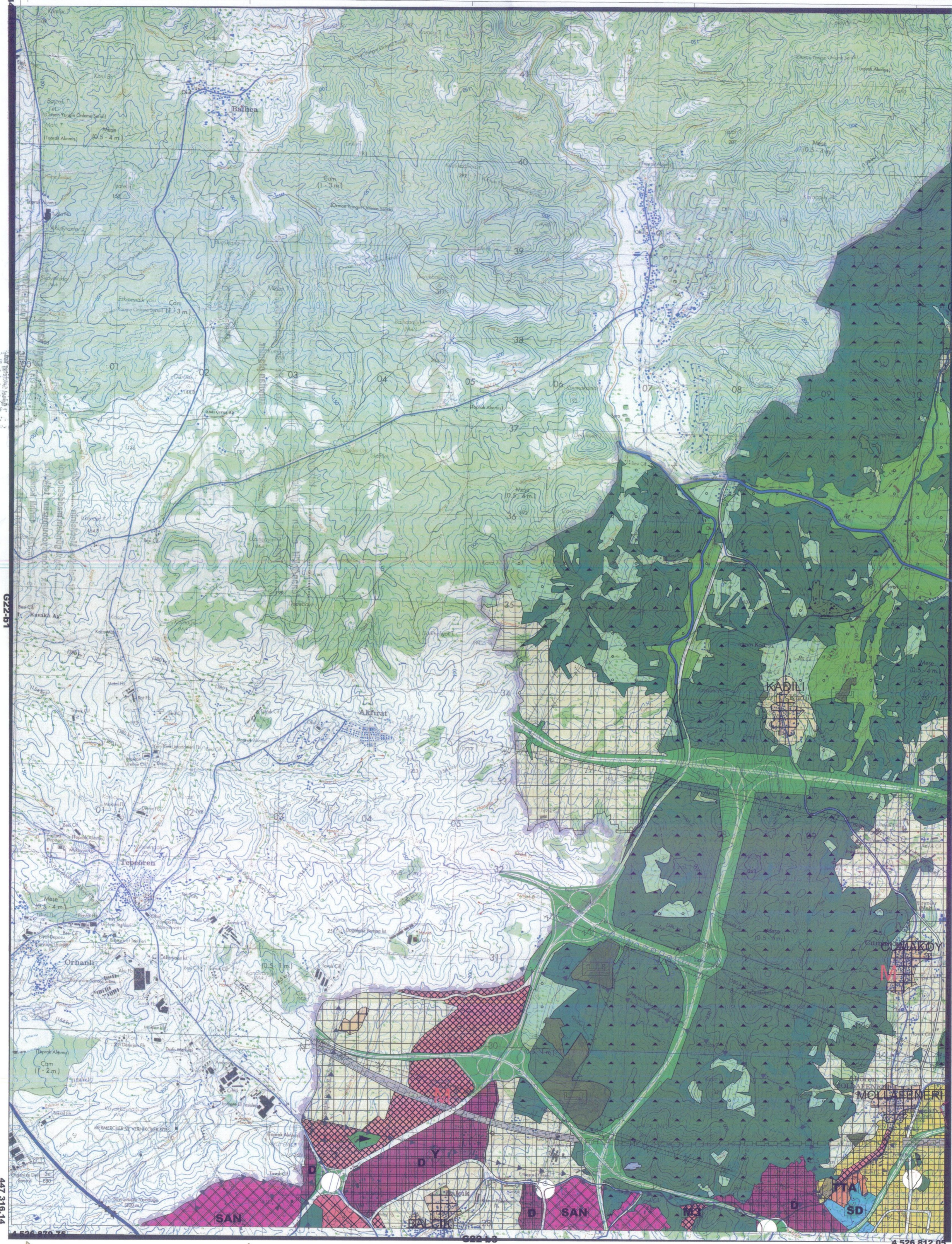
4 537 500

4 535 000

4 532 500

4 530 000

4 527 500



457 932.33

OVACIK

G22-b1

457 882.95

447 316.14

447 500

450 000

452 500

455 000

457 500

1/25000

KOCAELI-G22-b2
(GEBZE)

KOCAELİ

(GEBZE)

G22-b3

G22-b2

4 526 879.75

4 526 812.05

457 892.95

4 525 000

4 522 500

4 520 000

4 517 500

4 515 000

G22-b4

G22-b2

4a-23

447 217.17

457 773.78

447 500

450 000

452 500

455 000

457 500

1/25000



KOCAELİ-G22-b3
(GEBZE)